

Shrimathi Devkunvar Nanalal Bhatt Vaishnav College for Women (Autonomous)

Affiliated to University of Madras - Re-Accredited with 'A+' Grade by NAAC



Internal Quality Assurance Cell (IQAC)

STAKEHOLDERS' FEEDBACK

2022-2023

FEEDBACK REPORT ANALYSIS

STUDENT FEEDBACK ANALYSIS

2.1 STUDENT FEEDBACK QUESTIONS WITH RATING ON CURRICULUM

Rating 5-1 scale

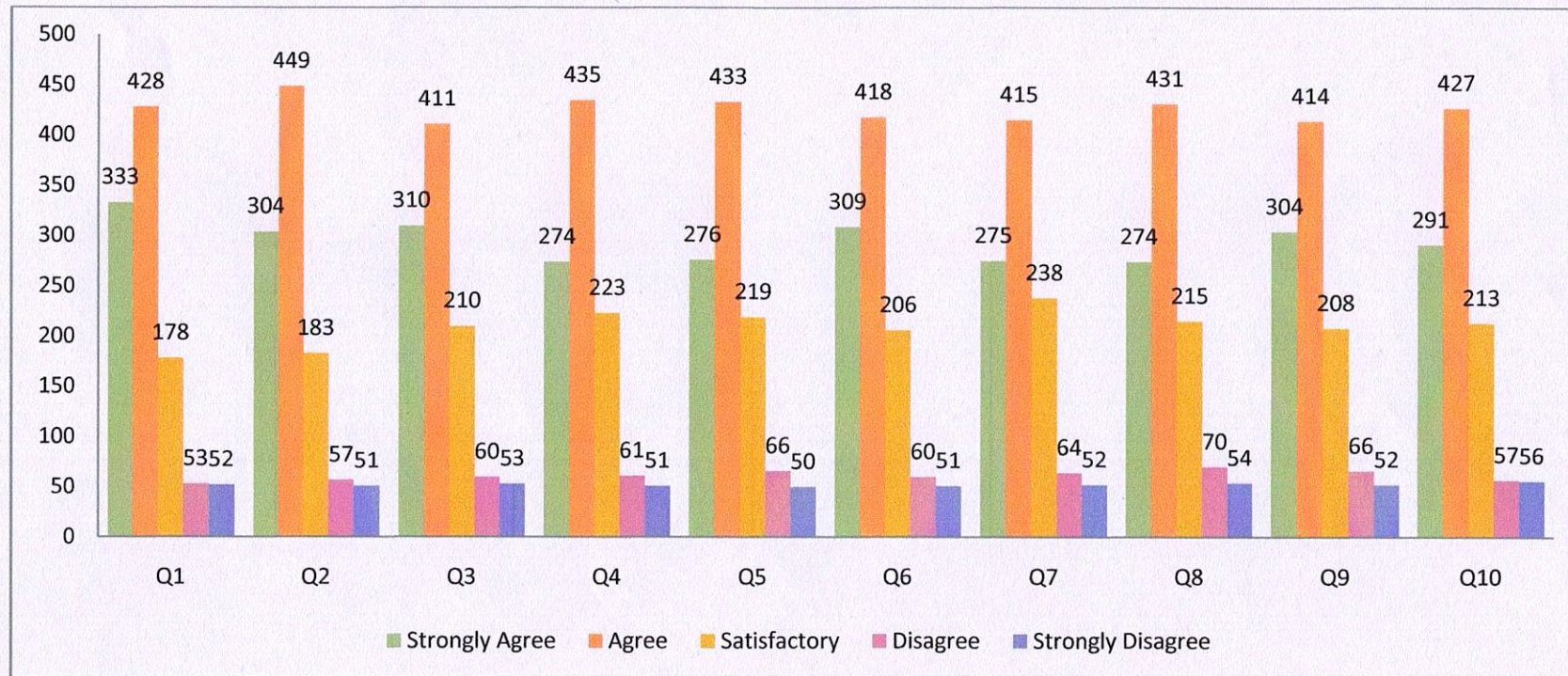
Response 1044

S. No	Particulars	5 Strongly Agree	4 Agree	3 Satisfactory	2 Disagree	1 Strongly Disagree
1.	Curriculum (course) objectives & outcomes are well defined & clearly stated	333	428	178	53	52
2.	Curriculum provides sufficient domain knowledge and values appropriate to the area of study	304	449	183	57	51
3.	Curriculum gives equal weightage to theory and applications	310	411	210	60	53
4.	Are the courses in the curriculum placed sequentially	274	435	223	61	51
5.	Curriculum is relevant in cultivating social and environmental consciousness	276	433	219	66	50
6.	The learning activities and assignments recommended are relevant to the courses	309	418	206	60	51
7.	Projects aid experiential learning/Hands on training	275	415	238	64	52
8.	Syllabus is updated periodically to meet the industry requirements	274	431	215	70	54
9.	Syllabus is updated periodically to meet the appropriate for Placement/Higher Education	304	414	208	66	52
10.	Curriculum imparts Human Values and Professional Ethics	291	427	213	57	56

R. Geetha
Principal

**SHRIMATHI DEVKUNVAR NANALAL BHATT
VAISHNAV COLLEGE FOR WOMEN
AUTONOMOUS, CHROMEPET, CHENNAI-44.**

2.2 STUDENT FEEDBACK ANALYSIS AND RECOMMENDATION



R. Geetha
Principal

SHRIMATHI DEVKUNVAR NANALAL BHATT
VAISHNAV COLLEGE FOR WOMEN
AUTONOMOUS, CHROMEPET, CHENNAI-44.

Student Feedback on Curriculum 2022-2023 (Even Semester)

Total: 1044

1. Curriculum (course) objectives & outcomes are well defined & clearly stated

Particulars	5 Strongly Agree	4 Agree	3 Satisfactory	2 Disagree	1 Strongly Disagree
Curriculum (course) objectives & outcomes are well defined & clearly stated	333	428	178	53	52

Introduction:

The purpose of this evaluation is to assess the clarity and value of curriculum objectives and outcomes. These objectives play a crucial role in guiding educational programs and ensuring students' understanding of what they should achieve. The Likert scale will be used to gauge the quality of these objectives and outcomes, with recommendations provided at each level.

Methodology:

A Likert scale with five points is used:

- 1: Strongly Disagree
- 2: Disagree
- 3: Satisfactory
- 4: Agree
- 5: Strongly Agree

Results: Observations and Recommendations

Students who have given a 3 to 5 likert scale observed and recommended the following

- The curriculum objectives and outcomes are clearly defined and well-aligned.
- They effectively guide the educational program.
- Stakeholders generally agree with the quality and clarity.
- The curriculum objectives and outcomes are exceptionally clear and valuable.
- They align perfectly with the educational goals and meet the needs of learners.
- They receive unanimous support and recognition from stakeholders.

R. Geetha

Principal 12
SHRIMATHI DEVKUNVAR NANALAL BHATT
VAISHNAV COLLEGE FOR WOMEN
A. J. J. ROAD, CHROMEPET, CHENNAI-44.

Suggestion:

- Maintain the quality and alignment of objectives.
- Regularly review them and seek input from stakeholders for minor improvements.
- Provide opportunities for students to apply their learning in practical scenarios.
- Continue to exemplify best practices in curriculum design.
- Regularly review and adapt objectives to stay current with educational trends.
- Promote success stories and examples of students achieving these objectives.

Students who have given a 2 to 1 likert scale observed and recommended the following

- The curriculum objectives and outcomes are moderately clear and aligned.
- They meet the basic requirements but lack elements of excellence.
- There is a balance of support and skepticism among stakeholders.
- The curriculum objectives and outcomes have some clarity but require improvement

Suggestion:

- Conduct regular evaluations to address concerns and make necessary adjustments.
- Include real-world applications and relevance in the objectives.
- Continuously monitor and evaluate the objectives and outcomes.
- Encourage constructive feedback and involve stakeholders in the review process.
- Enhance the objectives with real-world problem-solving elements.

Conclusion

Clear and valuable curriculum objectives and outcomes are essential for the success of educational programs. Using a Likert scale allows for a structured evaluation of their quality and value, with corresponding recommendations at each level.

2. Curriculum provides sufficient domain knowledge and values appropriate to the area of study

Particulars	5 Strongly Agree	4 Agree	3 Satisfactory	2 Disagree	1 Strongly Disagree
Curriculum provides sufficient domain knowledge and values appropriate to the area of study	304	449	183	57	51

R. Geetha

Principal
SHRIMATHI DEVKUNVAR NANALAL BHATT
VAISHNAV COLLEGE FOR WOMEN
AUTONOMOUS, CHROMEPET, CHENNAI-44.

This evaluation aims to assess the adequacy of domain knowledge and values included in the curriculum related to the specific area of study. Ensuring that the curriculum provides the right balance of content and values is crucial for effective education.

Students who have given a 3 to 5 likert scale observed and recommended the following

- The curriculum provides a robust understanding of domain knowledge.
- Stakeholders generally agree with the alignment with industry or societal needs.
- The curriculum is exemplary in providing domain knowledge and values.
- It aligns perfectly with the needs and expectations of the industry and society.

Suggestion:

- Maintain the quality and relevance of the curriculum.
- Continuously monitor industry trends and adapt the curriculum accordingly.
- Encourage faculty to emphasize the importance of values and ethics in the area of study.
- Maintain the curriculum's excellence and currency.
- Showcase success stories of graduates.

Students who have given a 2 to 1 likert scale observed and recommended the following

- The curriculum contains some domain knowledge, but key areas are missing.
- There is a noticeable misalignment with current industry or societal requirements.
- It covers core concepts but may need minor updates.

Suggestion:

- Collaborate with professionals to incorporate practical insights.
- Regularly assess the curriculum and identify areas for improvement.
- Make incremental enhancements to ensure currency and relevance.

Conclusion:

A curriculum that offers an appropriate balance of domain knowledge and values is vital for the success of educational programs.

3. Curriculum gives equal weightage to theory and applications

Particulars	5 Strongly Agree	4 Agree	3 Satisfactory	2 Disagree	1 Strongly Disagree
Curriculum gives equal weightage to theory and applications	310	411	210	60	53

R. Ganitha
 Principal
 SHRIMATHI DEVKUNVAR NANALAL BHATT
 VAISHNAV COLLEGE FOR WOMEN
 AUTONOMOUS, CHROMEPET, CHENNAI-44.

This evaluation aims to assess the balance between theory and practical applications within the curriculum. Striking the right equilibrium between theoretical knowledge and its practical application is crucial for comprehensive education

Students who have given a 3 to 5 likert scale observed and recommended the following

- The curriculum effectively balances theory and practical applications.
- It integrates theoretical knowledge with hands-on experiences.
- The curriculum excels in providing an equal weightage to theory and practical applications.
- It is highly relevant and prepares students for real-world challenges.

Suggestion:

- Maintain the balance and regularly assess its effectiveness.
- Showcase success stories of students who benefited from the practical elements.
- Promote interdisciplinary projects and encourage faculty to engage with the community.
- Continue to exemplify best practices in curriculum design.
- Foster a culture of innovation and practical problem-solving.

Students who have given a 2 to 1 likert scale observed and recommended the following

- Practical elements are present but are not adequately integrated.
- The curriculum maintains a reasonable balance between theory and practical applications.

Suggestion:

- Reevaluate the curriculum to ensure it includes practical experiences.
- Identify specific areas where practical applications can be integrated.
- Continue to seek feedback and fine-tune the curriculum's balance.
- Encourage faculty to incorporate more real-world examples in teaching.

Conclusion:

A curriculum that provides equal weightage to theory and applications is essential for a well-rounded education. Continuous improvement, engagement with industry partners, and staying attuned to real-world needs are essential for achieving an insightful curriculum design

R. Geetha

Principal

SHRIMATHI DEVKUNVAR NANALAL BHATT
VAISHNAV COLLEGE FOR WOMEN
AUTONOMOUS, CHROMEPET, CHENNAI-44.

4. Are the courses in the curriculum placed sequentially

Particulars	5 Strongly Agree	4 Agree	3 Satisfactory	2 Disagree	1 Strongly Disagree
Are the courses in the curriculum placed sequentially	274	435	223	61	51

This evaluation aims to assess the sequential arrangement of courses within the curriculum. Proper course sequencing is critical for facilitating students' understanding and ensuring a logical progression of learning.

Students who have given a 3 to 5 likert scale observed and recommended the following

- The curriculum excels in providing logically sequenced courses with well-defined prerequisites.
- It ensures a smooth and coherent progression of learning.
- Most stakeholders agree with the curriculum's sequencing and organization.

Suggestion:

Continuously monitor feedback and make minor adjustments as needed.

Foster a culture of academic advising and mentoring.

Showcase success stories of graduates who benefited from the well-structured curriculum.

Students who have given a 2 to 1 likert scale observed and recommended the following

- Students find it extremely challenging to navigate through the curriculum.
- There is room for improvement in providing a more coherent progression.

Suggestion:

- Identify areas where prerequisites and sequencing can be better defined.
- Develop a roadmap for students to understand the logical progression.

Conclusion:

Properly sequenced courses are vital for a coherent and effective curriculum. Continuous improvement, feedback incorporation, and support for students in understanding the sequencing are essential for achieving the purpose.

R. Geetha

Principal

SHRIMATHI DEVKUNVAR NANALAL BHATT

VAISHNAV COLLEGE FOR WOMEN

AUTONOMOUS, CHROMEPET, CHENNAI-44.

5. Curriculum is relevant in cultivating social and environmental consciousness

Particulars	5 Strongly Agree	4 Agree	3 Satisfactory	2 Disagree	1 Strongly Disagree
Curriculum is relevant in cultivating social and environmental consciousness	276	433	219	66	50

This evaluation aims to assess the curriculum's effectiveness in fostering social and environmental consciousness among students. Preparing students to address global challenges and promoting sustainability is essential.

Students who have given a 3 to 5 likert scale observed and recommended the following

- The curriculum excels in cultivating social and environmental consciousness.
- It is highly relevant in addressing global challenges and promoting sustainability.
- Most stakeholders agree with the curriculum's relevance in this regard

Suggestion:

- Offer elective courses or opportunities for students to specialize in sustainability.
- Continue to exemplify best practices in fostering social and environmental consciousness.
- Promote interdisciplinary projects that focus on social and environmental issues.
- Foster partnerships with organizations and institutions dedicated to social and environmental causes.

Students who have given a 2 to 1 likert scale observed and recommended the following

- The curriculum contains minimal elements related to social and environmental consciousness.
- Students have limited exposure to global challenges and sustainability.

Recommendation

- Enhance the curriculum by developing dedicated courses on social and environmental topics.
- Encourage faculty to infuse social and environmental consciousness into existing courses.

Conclusion:

A curriculum that effectively cultivates social and environmental consciousness is essential for preparing students to address global challenges and promote sustainability.

R. Geetha
Principal
SHRIMATHI DEVKUNVAR NANALAL BHATT
VAISHNAV COLLEGE FOR WOMEN
AUTONOMOUS, CHROMEPET, CHENNAI-44.

6. The learning activities and assignments recommended are relevant to the courses

Particulars	5 Strongly Agree	4 Agree	3 Satisfactory	2 Disagree	1 Strongly Disagree
The learning activities and assignments recommended are relevant to the courses	309	418	206	60	51

This evaluation aims to assess the appropriateness of learning activities and assignments within the courses. Ensuring that these activities align with the course content is vital for effective learning and skill development.

Students who have given a 3 to 5 likert scale observed and recommended the following

- They effectively align with course objectives and content.
- The learning activities and assignments are reasonably relevant to the courses.

Suggestion:

- Continue to exemplify best practices in designing and implementing relevant learning activities and assignments.
- Showcase examples of how these activities have positively impacted student learning.
- Promote interdisciplinary and experiential learning opportunities to further enhance relevance.

Students who have given a 2 to 1 likert scale observed and recommended the following

- Students are confused about how these activities contribute to their learning.
- They only partially align with course objectives and content.

Suggestion:

Provide explanations to students on how each activity relates to their learning.

- Seek input from both students and faculty to improve relevance.

Conclusion:

Relevant learning activities and assignments are essential for effective learning. Continuous improvement, alignment with course content, and active engagement of students are essential for achieving the point.

R. Geetha

Principal

SHRIMATHI DEVKUNVAR NANALAL BHATT
VAISHNAV COLLEGE FOR WOMEN¹⁸
AUTONOMOUS, CHROMEPET, CHENNAI-44.

7. Projects aid experiential learning/Hands on training

Particulars	5 Strongly Agree	4 Agree	3 Satisfactory	2 Disagree	1 Strongly Disagree
Projects aid experiential learning/Hands on training	275	415	238	64	52

This evaluation aims to assess the impact of projects on experiential learning and hands-on training within the curriculum. Projects play a vital role in providing students with practical experiences and application of knowledge.

Students who have given a 3 to 5 likert scale observed and recommended the following

- The projects effectively aid experiential learning and hands-on training.
- Some projects align well with course objectives and provide practical experiences.
- Most stakeholders agree with the quality and impact of the projects.

Suggestion:

- Continue to exemplify best practices in project design and experiential learning.
- Showcase success stories of students who have benefited from these projects.
- Foster a culture of innovation and interdisciplinary collaboration to further enhance effectiveness.
- Promote interdisciplinary and collaborative projects to enhance students' practical skills.

.Students who have given a 2 to 1 likert scale observed and recommended the following

- The projects have limited effectiveness in aiding experiential learning and hands-on training.
- Students find some projects disconnected from real-world applications.

Suggestion:

- Ensure that projects are closely tied to course content and learning objectives.
- Seek input from industry experts to develop more practical projects.
- Encourage student feedback to identify areas for improvement.

Conclusion:

R. Geetha
Principal
SHRIMATHI DEVKUNVAR NANALAL BHATT
VAISHNAV COLLEGE FOR WOMEN
AULUNUMOUS, CHROMEPET, CHENNAI-44.

Projects that effectively aid experiential learning and hands-on training are essential for student development. Continuous improvement, alignment with course content, and collaboration with industry partners are essential for achieving the goal.

8. Syllabus is updated periodically to meet the industry requirements

Particulars	5 Strongly Agree	4 Agree	3 Satisfactory	2 Disagree	1 Strongly Disagree
Syllabus is updated periodically to meet the industry requirements	274	431	215	70	54

This evaluation aims to assess the extent to which the syllabus is updated periodically to align with industry requirements. Keeping the curriculum current is essential to prepare students for the rapidly evolving job market.

Students who have given a 3 to 5 likert scale observed and recommended the following

- The syllabus is periodically updated to meet some industry requirements.
- While there are some relevant updates, others may lag behind.

Suggestion:

- Continuously assess the effectiveness of syllabus updates.
- Strive for a balance between maintaining core knowledge and adapting to industry trends.
- Foster strong relationships with industry partners to ensure ongoing alignment.

Students who have given a 2 to 1 likert scale observed and recommended the following

- Students receive some relevant knowledge but may still lack certain critical skills.
- The syllabus is rarely updated to meet industry requirements.

Suggestion:

- Establish regular update cycles with industry input.
- Engage with industry representatives for input on needed changes

Conclusion:

Syllabus updates that meet industry requirements are essential for student preparedness. Continuous improvement, regular collaboration with industry experts, and proactive updates are necessary.

R. Geetha

Principal

SHRIMATHI DEVKUNVAR NANALAL BHATT
VAISHNAV COLLEGE FOR WOMEN
AUTONOMOUS, CHROME PET, CHENNAI-44.

9. Syllabus is updated periodically to meet the appropriate for Placement/Higher Education

Particulars	5 Strongly Agree	4 Agree	3 Satisfactory	2 Disagree	1 Strongly Disagree
Syllabus is updated periodically to meet the appropriate for Placement/Higher Education	304	414	208	66	52

This evaluation aims to assess the extent to which the syllabus is updated periodically to align with the requirements for placement and higher education. Keeping the curriculum current is essential to prepare students for successful career placement and continued education.

Students who have given a 3 to 5 likert scale observed and recommended the following

- The syllabus is periodically updated to meet some placement and higher education requirements.
- Updates are well-timed and reflect the demands of the job market and educational institutions.

Suggestion:

- Continue to exemplify best practices in syllabus updates, with a strong emphasis on placement and higher education readiness.
- Showcase examples of students who have successfully secured placements and excelled in further studies due to their curriculum preparation.
- Foster strong relationships with employers and higher education institutions to ensure ongoing alignment

Students who have given a 2 to 1 likert scale observed and recommended the following

- Updates are sporadic and often lag behind the demands of the job market and educational institutions.
- Students receive some relevant knowledge but may still face challenges in placement or further studies.

Suggestion:

- Establish regular update cycles to ensure alignment with placement and higher education needs.
- Engage with employers and higher education institutions for input on needed changes.
- Prioritize the inclusion of content and skills relevant for both career placement and further studies.

Conclusion:

R. Princy
SHRIMATHI DEVKUNVAR NANALAL BHATT
VAISHNAV COLLEGE FOR WOMEN
AUTONOMOUS, CHROMEPET, CHENNAI-44.

Syllabus updates that align with placement and higher education requirements are essential for student success. Continuous improvement, regular collaboration with stakeholders, and proactive updates are essential.

10. Curriculum imparts Human Values and Professional Ethics

Particulars	5 Strongly Agree	4 Agree	3 Satisfactory	2 Disagree	1 Strongly Disagree
Curriculum imparts Human Values and Professional Ethics	291	427	213	57	56

This evaluation aims to assess the effectiveness of the curriculum in imparting human values and professional ethics. Preparing students to be not only skilled professionals but also ethical individuals is essential for the success of any educational program.

Students who have given a 3 to 5 likert scale observed and recommended the following

- The curriculum effectively imparts human values and professional ethics.
- Ethical considerations are an integral part of the program.

Suggestion:

- Maintain the quality and relevance of human values and professional ethics education.
- Promote interdisciplinary discussions on ethical issues.
- Encourage students to participate in community service and experiential learning related to ethics.

Students who have given a 2 to 1 likert scale observed and recommended the following

- The curriculum provides minimal focus on human values and professional ethics.
- Students receive limited guidance on ethical considerations.

Suggestion:

- Offer workshops and seminars to address ethical dilemmas in the profession.
- Encourage faculty to incorporate ethical discussions into existing courses.

Conclusion:

A curriculum that effectively imparts human values and professional ethics is essential for producing ethical professionals. Continuous improvement, interdisciplinary discussions, and experiential learning are essential for achieving the goal.

R. Geetha

Principal
SHRIMATHI DEVKUNVAR NANALAL BHATT
VAISHNAV COLLEGE FOR WOMEN
AUTONOMOUS, CHROME PET, CHENNAI-44.

FACULTY FEEDBACK ANALYSIS

2.3 FACULTY FEEDBACK QUESTIONS WITH RATING ON CURRICULUM

Rating 5-1 scale

Responses: 345

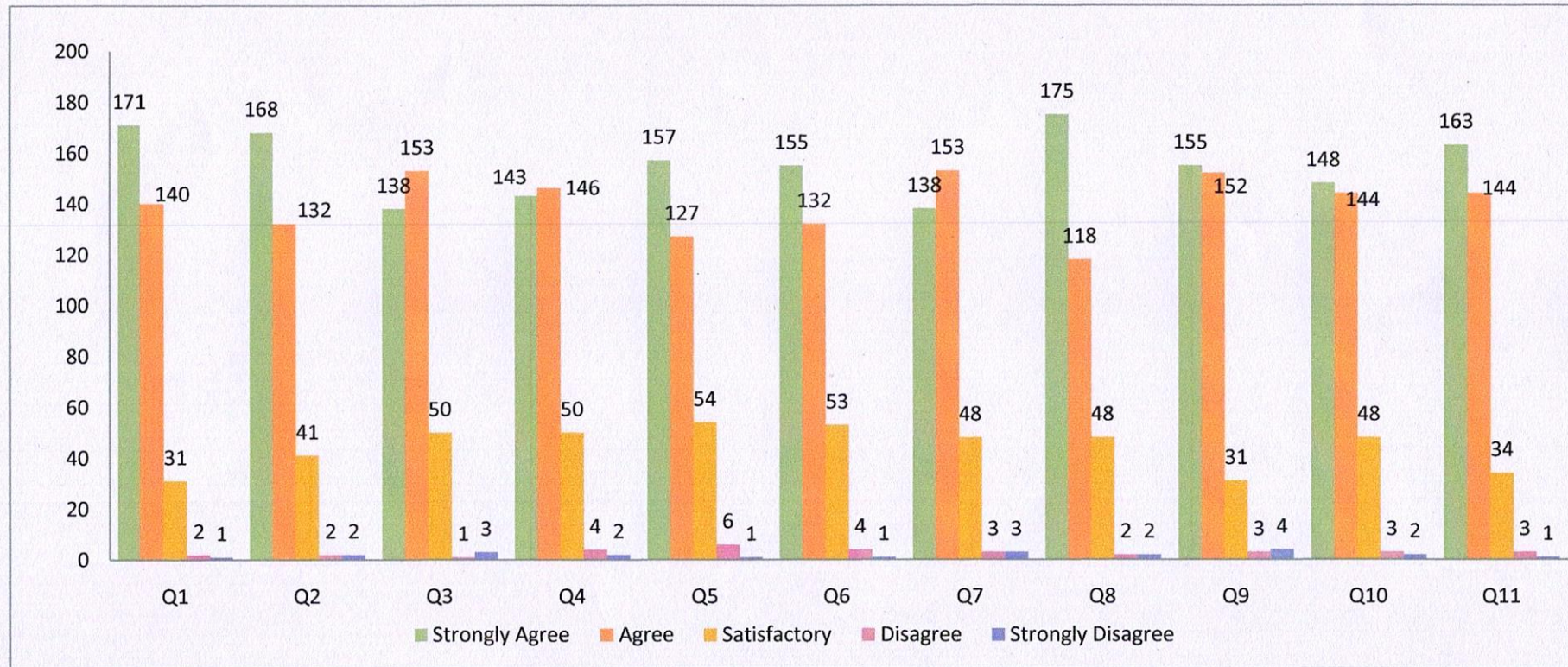
S. No	Particulars	5 Strongly Agree	4 Agree	3 Satisfactory	2 Disagree	1 Strongly Disagree
1.	Assortment and comprehensiveness of the courses offered – core. Allied and Elective.	171	140	31	2	1
2.	Advanced knowledge and skills appropriate to the discipline	168	132	41	2	2
3.	Regional and global relevance of the curriculum	138	153	50	1	3
4.	Balance of theory and its application	143	146	50	4	2
5.	Ability to develop creative, analytical and critical thinkers	157	127	54	6	1
6.	Employment orientation of the syllabus	155	132	53	4	1
7.	Thrust given to developing entrepreneurial competency	138	153	48	3	3
8.	Pertinence of curriculum for pursuing higher education and research	175	118	48	2	2
9.	Intrinsic focus on inculcating human values and professional ethics	155	152	31	3	4
10.	Revision of the curriculum based on suggestion from stakeholders	148	144	48	3	2
11.	Alignment of the curriculum with programme specific outcomes and course outcomes	163	144	34	3	1

R. Geetha

Principal

SHRIMATHI DEVKUNVAR NAMALAL BHATT
VAISHNAV COLLEGE FOR WOMEN 24
AUTONOMOUS, CHROMEPET, CHENNAI 600 044.

2.4 FACULTY FEEDBACK ANALYSIS AND RECOMMENDATION



R. Geetha
Principal
SHRIMATHI DEVKUNVAR NANALAL BHATT
VAISHNAV COLLEGE FOR WOMEN
AUTONOMOUS, CHROMEPET, CHENNAI-44.

1. Assortment and comprehensiveness of the courses offered – core. Allied and Elective

Particulars	5 Strongly Agree	4 Agree	3 Satisfactory	2 Disagree	1 Strongly Disagree
Assortment and comprehensiveness of the courses offered – core. Allied and Elective.	171	140	31	2	1

This report presents an evaluation of the assortment and comprehensiveness of the courses offered at our institution, specifically focusing on core, allied, and elective courses. Teachers play a vital role in assessing and enhancing the curriculum.

Faculty members who have given a 3 to 5 likert scale observed and recommended the following

- They believe that the curriculum provides a reasonable selection of courses but recognizes areas for enhancement.
- Teachers encourage more engagement in the curriculum development process.
- Teachers appreciate the extensive flexibility and choices available to students.

Recommendation

- Create opportunities for cross-disciplinary collaboration to further enhance course offerings.
- Provide support for teachers to engage in professional development and stay updated on best practices.

Faculty members who have given a 2 to 1 likert scale observed and recommended the following

- There is a slight gap between what is offered and what is needed for effective education.

Recommendation for 1:

- Create pathways for teachers to propose and develop new courses.

Conclusion:

R. Geetha
Principal
SHRIMATHI DEVKUNVAR NANALAL BHATT
VAISHNAV COLLEGE FOR WOMEN
AUTONOMOUS, CHROMEPET, CHENNAI - 44.

Teacher feedback is essential in evaluating the curriculum's assortment and comprehensiveness. Maintaining and enhancing the curriculum's assortment and comprehensiveness contributes to a robust and dynamic educational environment.

1. Advanced knowledge and skills appropriate to the discipline

Particulars	5 Strongly Agree	4 Agree	3 Satisfactory	2 Disagree	1 Strongly Disagree
Advanced knowledge and skills appropriate to the discipline	168	132	41	2	2

This report assesses the advanced knowledge and skills appropriate to the discipline, as perceived by teachers at our institution. Teachers play a pivotal role in evaluating the curriculum's alignment with the discipline's requirements.

Faculty members who have given a 3 to 5 likert scale observed and recommended the following

- Teachers agree with the advanced knowledge and skills imparted by the curriculum.
- They believe that the curriculum is well-aligned with the discipline's requirements.
- The existing curriculum effectively prepares students with the necessary knowledge and skills.

Recommendation

- Maintain and continuously enhance the quality of advanced knowledge and skills offered.
- Foster a culture of curriculum innovation among faculty.
- Provide support for teachers to engage in professional development and stay updated on industry best practices

Faculty members who have given a 2 to 1 likert scale observed and recommended the following

- The curriculum offers only limited preparation for students within the discipline.

Recommendation

- Consider enhancing or revising courses to better address the discipline's requirements.

Conclusion:

R. Geetha

Principal
SHRIMATHI DEVKUNVAR NANALAL BHATT
VAISHNAV COLLEGE FOR WOMEN
AUTONOMOUS, CHROMEPET, CHENNAI-44.

Teacher feedback is instrumental in evaluating the advanced knowledge and skills imparted by the curriculum. Maintaining and enhancing the curriculum's alignment with the discipline's requirements contributes to a strong and relevant educational experience.

2. Regional and global relevance of the curriculum

Particulars	5 Strongly Agree	4 Agree	3 Satisfactory	2 Disagree	1 Strongly Disagree
Regional and global relevance of the curriculum	138	153	50	1	3

This report assesses the regional and global relevance of the curriculum, as perceived by teachers at our institution. Teachers play a significant role in evaluating the curriculum's alignment with the evolving needs of our region and its competitiveness in the global context.

Faculty members who have given a 3 to 5 likert scale observed and recommended the following

- Teachers strongly agree with the regional and global relevance of the curriculum.
- They find the curriculum to be exemplary and fully aligned with the region's specific needs and competitive on a global scale.

Recommendation

- Continue to involve teachers in curriculum design and review processes.
- Create opportunities for cross-disciplinary collaboration to further enhance regional and global relevance.

Faculty members who have given a 2 to 1 likert scale observed and recommended the following

- There is a gap between the curriculum and the regional and global demands.
- The curriculum offers only limited alignment with regional and global needs.

Recommendation

- Consider enhancing or revising courses to better address the specific demands of our region and global competitiveness.
- Promote faculty involvement in curriculum development to strengthen alignment.

R. Geetha

Principal

SHRIMATHI DEVKUNVAR NANALAL BHATT
VAISHNAV COLLEGE FOR WOMEN
AUTONOMOUS, CHROMEPEET, CHENNAI-44

Conclusion:

Teacher feedback is instrumental in evaluating the regional and global relevance of the curriculum. Maintaining and enhancing the curriculum's alignment with the region's specific needs and global competitiveness contributes to a strong and relevant educational experience.

3. Balance of theory and its application

Particulars	5 Strongly Agree	4 Agree	3 Satisfactory	2 Disagree	1 Strongly Disagree
Balance of theory and its application	143	146	50	4	2

This report assesses the balance of theory and its application in the curriculum, as perceived by teachers at our institution. Teachers play a critical role in evaluating the curriculum's effectiveness in preparing students with both theoretical knowledge and practical skills.

Faculty members who have given a 3 to 5 likert scale observed and recommended the following

- Teachers strongly agree with the balance of theory and application in the curriculum.

Recommendation

- Create opportunities for cross-disciplinary collaboration to further enhance the curriculum's balance.

Faculty members who have given a 2 to 1 likert scale observed and recommended the following

- There is a gap between what is taught and the skills needed for real-world challenges

Recommendation

- They believe that the curriculum provides a reasonable foundation but recognizes areas for improvement
- Explore partnerships and collaborations with industry to bridge the gap between theory and practice.

R. Geetha
Principal
SHRIMATHI DEVKUNVAR NANALAL BHATT
VAISHNAV COLLEGE FOR WOMEN
AUTONOMOUS, CHROMEPET, CHENNAI-44.

Conclusion:

Teacher feedback is instrumental in evaluating the balance of theory and application in the curriculum. Maintaining and enhancing the balance between theory and application in the curriculum contributes to a well-rounded and practical educational experience.

4. Ability to develop creative, analytical and critical thinkers

Particulars	5 Strongly Agree	4 Agree	3 Satisfactory	2 Disagree	1 Strongly Disagree
Ability to develop creative, analytical and critical thinkers	157	127	54	6	1

This report assesses the ability of the curriculum to develop creative, analytical, and critical thinkers, as perceived by teachers at our institution. Teachers play a significant role in fostering students' cognitive abilities and critical thinking skills.

Faculty members who have given a 3 to 5 likert scale observed and recommended the following

- Teachers strongly agree with the ability of the curriculum to develop creative, analytical, and critical thinkers.

Recommendation

- Create opportunities for cross-disciplinary collaboration to further enhance the curriculum's effectiveness in developing creative, analytical, and critical thinkers.

Faculty members who have given a 2 to 1 likert scale observed and recommended the following

- They believe that the curriculum does not adequately promote these cognitive skills.
- There is a gap in the development of students' creative, analytical, and critical thinking abilities.

Recommendation

- Explore innovative pedagogical approaches and projects that promote these skills.

Conclusion:

R. Geetha

Principal

SHRIMATHI DEVKUNVAR NANALAL BHATT
VAISHNAV COLLEGE FOR WOMEN
AUTONOMOUS, CHROMEPET, CHENNAI-44.

Teacher feedback is instrumental in evaluating the ability of the curriculum to develop creative, analytical, and critical thinkers. Maintaining and enhancing the ability of the curriculum to foster cognitive skills contributes to a well-rounded and effective educational experience.

5. Employment orientation of the syllabus

Particulars	5 Strongly Agree	4 Agree	3 Satisfactory	2 Disagree	1 Strongly Disagree
Employment orientation of the syllabus	155	132	53	4	1

This report evaluates the employment orientation of the syllabus, as perceived by teachers at our institution. Teachers play a crucial role in assessing the syllabus's alignment with the skills and knowledge needed for students to secure gainful employment.

Faculty members who have given a 3 to 5 likert scale observed and recommended the following

- They believe that the syllabus effectively prepares students for employment

Recommendation

- Maintain and continuously enhance the quality of employment-oriented elements in the syllabus.

Faculty members who have given a 2 to 1 likert scale observed and recommended the following

- They believe that the syllabus does not adequately prepare students for the job market.

Recommendation

- Conduct a comprehensive review of the syllabus to align it with employment needs.

Conclusion:

Teacher feedback is instrumental in evaluating the employment orientation of the syllabus. Maintaining and enhancing the employment orientation of the syllabus contributes to a well-rounded and effective educational experience that equips students for gainful employment.

R. Geetha
Principal

SHRIMATHI DEVKUNVAR NANALAL BHATT
VAISHNAV COLLEGE FOR WOMEN
AUTONOMOUS, CHROMEPET, CHENNAI-44.

6. Thrust given to developing entrepreneurial competency

Particulars	5 Strongly Agree	4 Agree	3 Satisfactory	2 Disagree	1 Strongly Disagree
Thrust given to developing entrepreneurial competency	138	153	48	3	3

This report assesses the emphasis placed on developing entrepreneurial competency in the curriculum, as perceived by teachers at our institution. Teachers play a pivotal role in evaluating the curriculum's focus on fostering entrepreneurial skills among students.

Faculty members who have given a 3 to 5 likert scale observed and recommended the following

- Teachers strongly agree with the emphasis on developing entrepreneurial competency in the curriculum

Recommendation

- Create opportunities for cross-disciplinary collaboration to further enhance the curriculum's effectiveness in developing entrepreneurial skills.

Faculty members who have given a 2 to 1 likert scale observed and recommended the following

- They believe that the curriculum does not adequately prioritize the development of entrepreneurial skills.

Recommendation

- Collaborate with entrepreneurship experts to infuse real-world entrepreneurial requirements into the curriculum.

Conclusion:

Teacher feedback is instrumental in evaluating the emphasis on developing entrepreneurial competency in the curriculum. Maintaining and enhancing the emphasis on entrepreneurial competency in the curriculum contributes to a well-rounded and effective educational experience that equips students for entrepreneurship.

R. Geetha

Principal

SHRIMATHI DEVKUNVAR NANALAL BHATT
VAISHNAV COLLEGE FOR WOMEN
AUTONOMOUS, CHROMEPET, CHENNAI - 14.

7. Pertinence of curriculum for pursuing higher education and research

Particulars	5 Strongly Agree	4 Agree	3 Satisfactory	2 Disagree	1 Strongly Disagree
Pertinence of curriculum for pursuing higher education and research	175	118	48	2	2

This report assesses the pertinence of the curriculum for pursuing higher education and research, as perceived by teachers at our institution. Teachers play a vital role in evaluating the curriculum's alignment with the needs of students who aspire to continue their education and engage in research

Faculty members who have given a 3 to 5 likert scale observed and recommended the following

- Teachers appreciate the depth and breadth of academic and research readiness offered to students.

Recommendation

- Teachers recommend more active engagement in curriculum development to enhance readiness for higher education and research.

Faculty members who have given a 2 to 1 likert scale observed and recommended the following

- They believe that the curriculum does not adequately prepare students for further academic pursuits or research

Recommendation

- Collaborate with academic and research institutions to incorporate real-world academic and research requirements into the curriculum.

Conclusion:

Teacher feedback is instrumental in evaluating the pertinence of the curriculum for pursuing higher education and research. Maintaining and enhancing the pertinence of the curriculum for higher education and research contributes to a well-rounded and effective educational experience that equips students for their academic and research aspirations.

R. Geetha

Principal

SHRIMATHI DEVKUNVAR NANALAL BHATT
VAISHNAV COLLEGE FOR
AUTONOMOUS, CHRONIPEI, CH.

8. Intrinsic focus on inculcating human values and professional ethics

Particulars	5 Strongly Agree	4 Agree	3 Satisfactory	2 Disagree	1 Strongly Disagree
Intrinsic focus on inculcating human values and professional ethics	155	152	31	3	4

This report assesses the intrinsic focus on inculcating human values and professional ethics in the curriculum, as perceived by teachers at our institution. Teachers play a critical role in evaluating the curriculum's effectiveness in promoting ethical and value-based education.

Faculty members who have given a 3 to 5 likert scale observed and recommended the following

- Teachers agree with the intrinsic focus on inculcating human values and professional ethics in the curriculum.

Recommendation

- Create opportunities for cross-disciplinary collaboration to further enhance the curriculum's effectiveness in promoting human values and professional ethics.

Faculty members who have given a 2 to 1 likert scale observed and recommended the following

- They believe that the curriculum does not sufficiently prioritize the development of ethical values.

Recommendation

- Collaborate with teachers to identify gaps in the curriculum's coverage of human values and professional ethics.

Conclusion:

Teacher feedback is instrumental in evaluating the intrinsic focus on inculcating human values and professional ethics in the curriculum. Maintaining and enhancing the intrinsic focus on human values and professional ethics in the curriculum contributes to a well-rounded and ethical educational experience.

R. Geetha
Principal
SHRIMATHI DEVKUNVAR NANALABHATT
VAISHNAV COLLEGE FOR WOMEN
AUTONOMOUS, CHROMEPET, CHENNAI-44.

9. Revision of the curriculum based on suggestion from stakeholders

Particulars	5 Strongly Agree	4 Agree	3 Satisfactory	2 Disagree	1 Strongly Disagree
Revision of the curriculum based on suggestion from stakeholders	148	144	48	3	2

This report assesses the process of revising the curriculum based on suggestions from stakeholders, as perceived by teachers at our institution. Teachers play a pivotal role in evaluating the responsiveness of the curriculum to feedback and recommendations provided by various stakeholders.

Faculty members who have given a 3 to 5 likert scale observed and recommended the following

- The existing process is responsive to stakeholder input.

Recommendation

- Create opportunities for cross-disciplinary collaboration to further enhance the process's effectiveness in incorporating stakeholder feedback

.Faculty members who have given a 2 to 1 likert scale observed and recommended the following

- The process offers only limited responsiveness to stakeholder feedback.

Recommendation

- Consider enhancing or revising the process to better integrate feedback into curriculum updates.

Conclusion:

Teacher feedback is instrumental in evaluating the process of revising the curriculum based on suggestions from stakeholders. Maintaining and enhancing the responsiveness of the curriculum to stakeholder feedback contributes to a well-rounded and effective educational experience.

R. Geetha

Principal

SHRIMATHI DEVKUNVAR NANALAL BHATT
VAISHNAV COLLEGE FOR WOMEN
AUTONOMOUS, CHROMPET, CHENNAI-44.

10. Alignment of the curriculum with programme specific outcomes and course outcomes

Particulars	5 Strongly Agree	4 Agree	3 Satisfactory	2 Disagree	1 Strongly Disagree
Alignment of the curriculum with programme specific outcomes and course outcomes	163	144	34	3	1

This report assesses the alignment of the curriculum with program-specific outcomes and course outcomes, as perceived by teachers at our institution. Teachers play a pivotal role in evaluating the effectiveness of curriculum alignment with desired educational outcomes.

Faculty members who have given a 3 to 5 likert scale observed and recommended the following

- They believe that the curriculum effectively corresponds with educational goals..

Recommendation

- Provide support for teachers to engage in professional development to ensure effective alignment.

Faculty members who have given a 2 to 1 likert scale observed and recommended the following

- The curriculum offers only limited correspondence with the desired outcomes.

Recommendation

- Encourage interdisciplinary discussions among faculty to ensure effective alignment with outcomes.

Conclusion:

Teacher feedback is instrumental in evaluating the alignment of the curriculum with program-specific outcomes and course outcomes. Maintaining and enhancing the alignment of the curriculum with desired outcomes contributes to a well-rounded and effective educational experience.

R. Geetha
Principal
SHRIMATHI DEVKUNVAR NANALAL BHATT
VAISHNAV COLLEGE FOR WOMEN
AUTONOMOUS, CHROMEPET, CHENNAI-44

ALUMNI FEEDBACK ANALYSIS

2.5 ALUMNI FEEDBACK QUESTIONS WITH RATING ON CURRICULUM

Rating 5-1 Scale

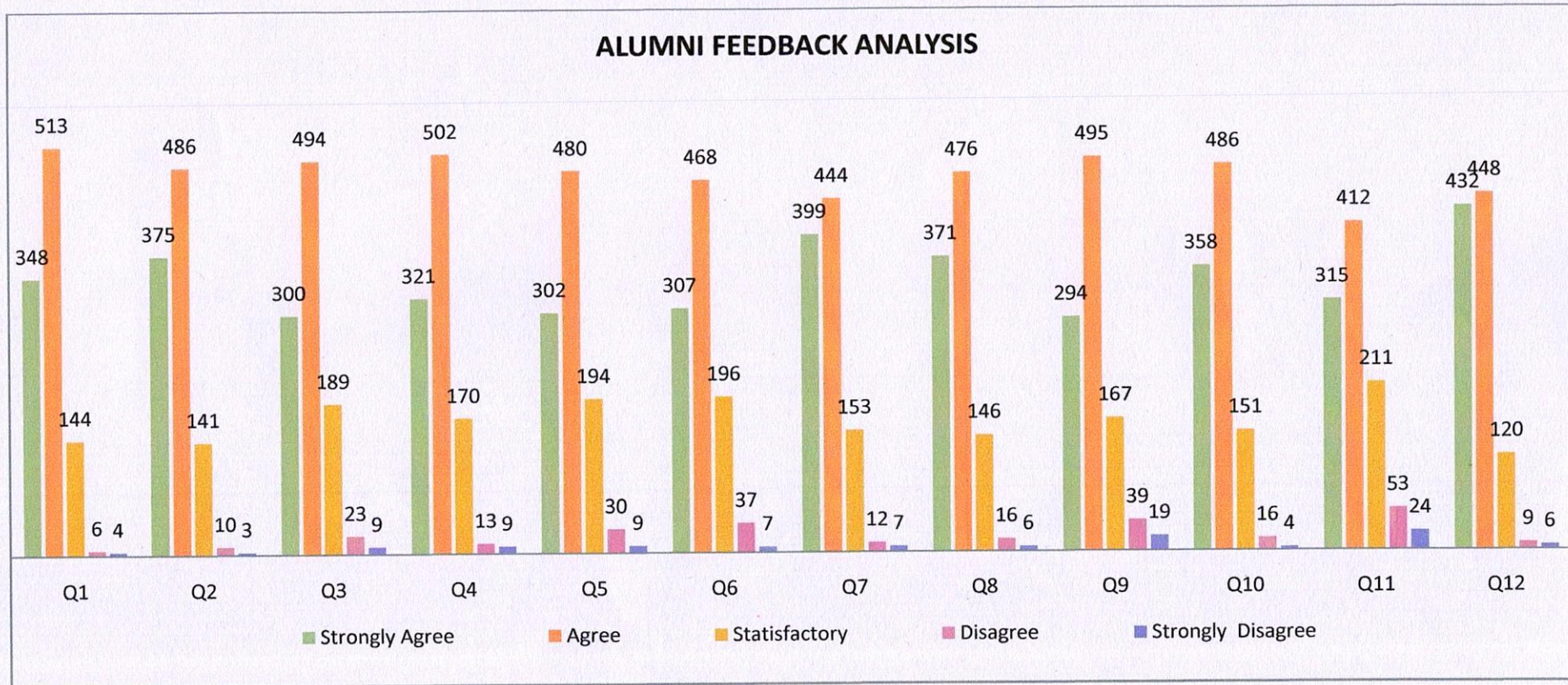
Responses: 1015

S. No	Particulars	5 Strongly Agree	4 Agree	3 Satisfactory	2 Disagree	1 Strongly Disagree
1.	Extensiveness of courses offered	348	513	144	6	4
2.	Advanced knowledge and skills appropriate to the discipline	375	486	141	10	3
3.	Relevance of the curriculum in meeting social and industry needs	300	494	189	23	9
4.	Adequacy of preparation for a related career	321	502	170	13	9
5.	Developing entrepreneurial competency	302	480	194	30	9
6.	Stimulating research aptitude	307	468	196	37	7
7.	Enhancing communication skills – verbal and written	399	444	153	12	7
8.	Encouraging social and environmental consciousness	371	476	146	16	6
9.	Sensitization on gender-related issues	294	496	167	39	19
10.	Inculcation of human values and professional ethics	358	486	151	16	4
11.	Opportunities for pursuing internship	315	412	211	53	24
12.	Overall quality of education provided by the institution	432	448	120	9	6

R. Geetha
Principal

SHRIMATHI DEVKUNVAR NAMALAL BHATT
VAISHNAV COLLEGE FOR WOMEN
AUTONOMOUS, CHROMEPET, CHENNAI - 44.

2.6 ALUMNI FEEDBACK ANALYSIS AND RECOMMENDATION



R. Geetha
Principal

SHRIMATHI DEVKUNVAR NANALAL BHATT
VAISHNAV COLLEGE FOR WOMEN
AUTONOMOUS, CHROMEPET, CHENNAI-44.

1. Extensiveness of courses offered

Particulars	5 Strongly Agree	4 Agree	3 Satisfactory	2 Disagree	1 Strongly Disagree
Extensiveness of courses offered	348	513	144	6	4

This report assesses the extensiveness of the courses offered by the institution, as perceived by alumni who have completed their education here. Alumni feedback is invaluable in evaluating the range and depth of courses that our institution provides.

Alumni who have given a 3 to 5 likert scale observed and recommended the following

- The existing course offerings cater to a wide spectrum of educational interests.

Recommendation

- Provide opportunities for alumni to contribute to course development and expansion.

Alumni who have given a 2 to 1 likert scale observed and recommended the following

- Alumni hold a neutral stance on the extensiveness of the courses offered.

Recommendation

- Engage alumni in regular discussions to identify areas for course expansion.

Conclusion:

Alumni feedback is instrumental in evaluating the extensiveness of the courses offered by the institution. Maintaining and enhancing the extensiveness of course offerings contributes to a diverse and effective educational experience.

R. Geetha
Principal
SHRIMATHI DEVKUNVAR NANALAL BHATT
VAISHNAV COLLEGE FOR WOMEN
AUTONOMOUS, CHROME PET, CHENNAI-44.

2. Advanced knowledge and skills appropriate to the discipline

Particulars	5 Strongly Agree	4 Agree	3 Satisfactory	2 Disagree	1 Strongly Disagree
Advanced knowledge and skills appropriate to the discipline	375	486	141	10	3

This report assesses the provision of advanced knowledge and skills appropriate to the discipline, as perceived by alumni who have completed their education at our institution. Alumni feedback is invaluable in evaluating whether our institution has effectively equipped them with the necessary expertise for their chosen field of study.

Alumni who have given a 3 to 5 likert scale observed and recommended the following

- Alumni recommend more diverse and advanced courses in their respective fields.

Recommendation

- Establish a feedback mechanism for alumni to suggest additional courses and areas of study.

Alumni who have given a 2 to 1 likert scale observed and recommended the following

- Their education provided only limited preparation in terms of skills and knowledge.

Recommendation

- Conduct a comprehensive review of the curriculum to ensure better alignment with the expectations of advanced knowledge and skills.

Conclusion:

Alumni feedback is instrumental in evaluating the provision of advanced knowledge and skills appropriate to their discipline. Maintaining and enhancing the provision of advanced knowledge and skills contributes to a well-rounded and effective educational experience.

R. Geetha
Principal
SHRIMATHI DEVKUNVAR NANALAL BHATT
VAISHNAV COLLEGE FOR WOMEN
AUTONOMOUS, CHROMEPET, CHENNAI-44.

3. Relevance of the curriculum in meeting social and industry needs

Particulars	5 Strongly Agree	4 Agree	3 Satisfactory	2 Disagree	1 Strongly Disagree
Relevance of the curriculum in meeting social and industry needs	300	494	189	23	9

This report assesses the relevance of the curriculum in meeting social and industry needs, as perceived by alumni who have completed their education at our institution. Alumni feedback is essential in evaluating whether our institution's curriculum aligns with the dynamic requirements of both society and industry.

Alumni who have given a 3 to 5 likert scale observed and recommended the following

- They find the curriculum to be exemplary, fully meeting their expectations for relevance.

Recommendation

- Continue to involve alumni in discussions about curriculum development to maintain the high standard.

Alumni who have given a 2 to 1 likert scale observed and recommended the following

- Alumni hold a neutral stance on the relevance of the curriculum in meeting social and industry needs.

Recommendation

- Consider revising and updating courses to provide a more robust foundation in addressing current industry and social challenges.

Conclusion:

Alumni feedback is instrumental in evaluating the relevance of the curriculum in meeting social and industry needs. Maintaining and enhancing the curriculum's relevance contributes to a well-rounded and effective educational experience that prepares students to address real-world challenges.

R. Anitha
Principal
SHRIMATHI DEVKUNVAR NANALAL BHATT
VAISHNAV COLLEGE FOR WOMEN
AUTONOMOUS, CHROMEPET, CHENNAI-44.

4. Adequacy of preparation for a related career

Particulars	5 Strongly Agree	4 Agree	3 Satisfactory	2 Disagree	1 Strongly Disagree
Adequacy of preparation for a related career	321	502	170	13	9

This report assesses the adequacy of preparation for a related career, as perceived by alumni who have completed their education at our institution. Alumni feedback is essential in evaluating whether our institution has effectively prepared them for their chosen careers.

Alumni who have given a 3 to 5 likert scale observed and recommended the following

- The existing curriculum effectively catered to their educational and professional needs.

Recommendation

- Maintain and continuously enhance the quality of curriculum to ensure alignment with the requirements of related careers.

Alumni who have given a 2 to 1 likert scale observed and recommended the following

- Alumni hold a neutral stance on the adequacy of preparation for a related career.

Recommendation

- Collaborate with alumni to identify gaps in the curriculum and specific areas that need enhancement to meet the demands of related careers.

Conclusion:

Alumni feedback is instrumental in evaluating the adequacy of preparation for related careers. Maintaining and enhancing the curriculum's effectiveness in career preparation contributes to a well-rounded and successful educational experience that equips students to excel in their chosen professions.

5. Developing entrepreneurial competency

Particulars	5 Strongly Agree	4 Agree	3 Satisfactory	2 Disagree	1 Strongly Disagree
Developing entrepreneurial competency	302	480	194	30	9

R. Geetha

Principal 43

SHRIMATHI DEVKUNVAR NANALAL BHATT
VAISHNAV COLLEGE FOR WOMEN
AUTONOMOUS, CHROMEPET, CHENNAI - 44.

This report assesses the development of entrepreneurial competency as perceived by alumni who have completed their education at our institution. Alumni feedback is essential in evaluating whether our institution has effectively fostered entrepreneurial skills and mindset.

Alumni who have given a 3 to 5 likert scale observed and recommended the following

- Alumni agree with the development of entrepreneurial competency.

Recommendation

- Continue to involve alumni in discussions about entrepreneurial development to maintain the high standard.

Alumni who have given a 2 to 1 likert scale observed and recommended the following

- Alumni recommend more diverse and practical opportunities for entrepreneurial development

Recommendation

- Encourage interdisciplinary discussions to introduce new courses and practical experiences that nurture entrepreneurial skills.

Conclusion:

Alumni feedback is instrumental in evaluating the development of entrepreneurial competency. Maintaining and enhancing the development of entrepreneurial competency contributes to a well-rounded and successful educational experience that equips students with the skills and mindset needed for entrepreneurship.

6. Stimulating research aptitude

Particulars	5 Strongly Agree	4 Agree	3 Satisfactory	2 Disagree	1 Strongly Disagree
Stimulating research aptitude	307	468	196	37	7

This report assesses the effectiveness of stimulating research aptitude as perceived by alumni who have completed their education at our institution. Alumni feedback is essential in evaluating whether our institution has effectively nurtured research skills and a research-oriented mindset.

R. Geetha
Principal
SHRIMATHI DEVKUNVAR NANALAL BHATT
VAISHNAV COLLEGE FOR WOMEN
AUTONOMOUS, CHROME PET, CHENNAI-44.

Alumni who have given a 3 to 5 likert scale observed and recommended the following

- Alumni hold a neutral stance on the effectiveness of stimulating research aptitude.
- They believe that their education effectively nurtured research skills and a research-oriented mindset.

Recommendation

- Encourage interdisciplinary discussions to introduce new courses, research projects, and practical experiences that nurture research skills.
- Provide opportunities for alumni to contribute to research initiatives, mentorship programs, and share their research experiences

Alumni who have given a 2 to 1 likert scale observed and recommended the following

- Their education provided only limited preparation for research-oriented endeavors.

Recommendation

- Consider revising and updating courses, expanding research opportunities, and mentorship programs.

Conclusion:

Alumni feedback is instrumental in evaluating the effectiveness of stimulating research aptitude. Maintaining and enhancing the development of research aptitude contributes to a well-rounded and successful educational experience that equips students with the skills and mindset needed for impactful research.

7. Enhancing communication skills – verbal and written

Particulars	5 Strongly Agree	4 Agree	3 Satisfactory	2 Disagree	1 Strongly Disagree
Enhancing communication skills – verbal and written	399	444	153	12	7

This report assesses the effectiveness of enhancing communication skills, both verbal and written, as perceived by alumni who have completed their education at our institution. Alumni feedback is crucial in evaluating whether our institution has effectively nurtured communication skills essential for success in professional and personal life.

R. Geetha

Principal

SHRIMATHI DEVKUNVAR NANALAL BHATT
VAISHNAV COLLEGE FOR WOMEN
AUTONOMOUS, CHROMEPET, CHENNAI-44.

Alumni who have given a 3 to 5 likert scale observed and recommended the following

- Alumni agree with the effectiveness of enhancing communication skills.

Recommendation

- Maintain and continuously enhance the quality of communication skills development to ensure alignment with the evolving demands of communication.

Alumni who have given a 2 to 1 likert scale observed and recommended the following

- Alumni recommend more diverse and practical communication opportunities and training.

Recommendation

- Encourage interdisciplinary discussions to introduce new courses, workshops, and practical experiences that nurture communication skills.

Conclusion:

Alumni feedback is instrumental in evaluating the effectiveness of enhancing communication skills, both verbal and written. Maintaining and enhancing the development of communication skills contributes to a well-rounded and successful educational experience that equips students with the skills needed for effective communication in all aspects of life.

Encouraging social and environmental consciousness

Particulars	5 Strongly Agree	4 Agree	3 Satisfactory	2 Disagree	1 Strongly Disagree
Encouraging social and environmental consciousness	371	476	146	16	6

This report assesses the effectiveness of encouraging social and environmental consciousness as perceived by alumni who have completed their education at our institution. Alumni feedback is crucial in evaluating whether our institution has successfully instilled social and environmental awareness and responsibility.

R. Geetha
Principal
SHRIMATHI DEVKUNVAR NANALAL BHATT
VAISHNAV COLLEGE FOR WOMEN
AUTONOMOUS, CHROMEPET, CHENNAI-44.

Alumni who have given a 3 to 5 likert scale observed and recommended the following

- The existing curriculum and extracurricular activities effectively catered to their social and environmental aspirations

Recommendation

- Provide opportunities for alumni to contribute to social and environmental initiatives, projects, and share their experiences.

.Alumni who have given a 2 to 1 likert scale observed and recommended the following

- Their education provided only limited preparation for addressing social and environmental challenges.

Recommendation

- Collaborate with alumni to identify gaps in the curriculum and specific areas that need enhancement to foster social and environmental awareness and responsibility.

Conclusion:

Alumni feedback is instrumental in evaluating the effectiveness of encouraging social and environmental consciousness. Maintaining and enhancing the development of social and environmental consciousness contributes to a well-rounded and successful educational experience that equips students with the awareness and responsibility needed to address real-world challenges.

8. Sensitization on gender-related issues

Particulars	5 Strongly Agree	4 Agree	3 Satisfactory	2 Disagree	1 Strongly Disagree
Sensitization on gender-related issues	294	496	167	39	19

This report assesses the effectiveness of sensitization on gender-related issues as perceived by alumni who have completed their education at our institution. Alumni feedback is crucial in evaluating whether our institution has successfully instilled an understanding of and sensitivity to gender-related matters

R. Geetha

Principal

SHRIMATHI DEVKUNVAR NANALAL BHATT
VAISHNAV COLLEGE FOR WOMEN
AUTONOMOUS, CHROME PET, CHENNAI-44.

Alumni who have given a 3 to 5 likert scale observed and recommended the following

- Alumni hold an agreeable stance on the effectiveness of sensitization on gender-related issues.

Recommendation

- Maintain and continuously enhance the quality of gender-related sensitization to ensure alignment with the evolving demands of gender-related issues.

Alumni who have given a 2 to 1 likert scale observed and recommended the following

- Alumni recommend more diverse and practical opportunities for gender-related engagement and understanding.

Recommendation

- Engage alumni in regular discussions and surveys to identify areas for improvement and enhancement in the curriculum related to gender-related sensitization.

Conclusion:

Alumni feedback is instrumental in evaluating the effectiveness of sensitization on gender-related issues. Maintaining and enhancing the sensitization on gender-related issues contributes to a well-rounded and successful educational experience that equips students with the awareness and sensitivity needed to promote gender equality and address gender-related challenges.

9. Inculcation of human values and professional ethics

Particulars	5 Strongly Agree	4 Agree	3 Satisfactory	2 Disagree	1 Strongly Disagree
Inculcation of human values and professional ethics	358	486	151	16	4

This report assesses the effectiveness of inculcating human values and professional ethics as perceived by alumni who have completed their education at our institution. Alumni feedback is essential in evaluating whether our institution has successfully instilled a strong foundation of values and ethics in its graduates.

R. Geetha
Principal

SHRIMATHI DEVKUNVAR NANALAL BHATT
VAISHNAV COLLEGE FOR WOMEN
AUTONOMOUS, CHROME PET, CHENNAI-44.

Alumni who have given a 3 to 5 likert scale observed and recommended the following

- Alumni agree with the effectiveness of inculcating human values and professional ethics.

Recommendation

- Engage alumni in regular discussions and surveys to identify areas for improvement and enhancement in the curriculum related to values and ethics
- Establish a feedback mechanism for alumni to suggest additional ethics and values programs and areas of study.

.Alumni who have given a 2 to 1 likert scale observed and recommended the following

- Alumni recommend more diverse and practical opportunities for gender-related engagement and understanding.

Recommendation

- Conduct a comprehensive review of the curriculum and extracurricular activities to enhance the inculcation of human values and professional ethics.

Conclusion:

Alumni feedback is instrumental in evaluating the effectiveness of inculcating human values and professional ethics. Maintaining and enhancing the inculcation of human values and professional ethics contributes to a well-rounded and successful educational experience that equips students with the values and ethics needed for ethical decision-making and responsible behavior in personal and professional life.

10. Opportunities for pursuing internship

Particulars	5 Strongly Agree	4 Agree	3 Satisfactory	2 Disagree	1 Strongly Disagree
Opportunities for pursuing internship	315	412	211	53	23

This report assesses the opportunities for pursuing internships as perceived by alumni who have completed their education at our institution. Alumni feedback is essential in evaluating whether our institution has effectively provided opportunities for internships, a critical component of experiential learning.

R. Geetha
Principal

SHRIMATHI DEVKUNVAR NANALAL BHATT
VAISHNAV COLLEGE FOR WOMEN
AUTONOMOUS, CHROME PET, CHENNAI-44.

Alumni who have given a 3 to 5 likert scale observed and recommended the following

- Alumni hold a neutral stance on the opportunities for pursuing internships

Recommendation

- Collaborate with alumni to identify gaps in the internship programs and specific areas that need enhancement.
- Consider expanding the range of internship opportunities, including partnerships with a wider variety of organizations.
- Encourage interdisciplinary discussions to introduce new types of internships, projects, and practical experiences.

.Alumni who have given a 2 to 1 likert scale observed and recommended the following

- Alumni recommend more diverse and practical opportunities for gender-related engagement and understanding.

Recommendation

- Conduct a comprehensive review of the institution's internship programs and partnerships with organizations to enhance opportunities.
- Engage alumni in discussions to understand their specific expectations and areas that need improvement.
- Collaborate with industry partners to identify areas for enhancing internship opportunities.

Conclusion:

Alumni feedback is instrumental in evaluating the opportunities for pursuing internships. Maintaining and enhancing opportunities for pursuing internships contributes to a well-rounded and successful educational experience that equips students with the practical skills and experiences needed for career readiness.

11. Overall quality of education provided by the institution

Particulars	5 Strongly Agree	4 Agree	3 Satisfactory	2 Disagree	1 Strongly Disagree
Overall quality of education provided by the institution	432	448	120	9	5

R. Geetha
Principal

SHRIMATHI DEVKUNVAR NANALAL BHATT
VAISHNAV COLLEGE FOR WOMEN
AUTONOMOUS, CHROMEPET, CHENNAI-44.

This report assesses the overall quality of education provided by the institution as perceived by alumni who have completed their education. Alumni feedback is essential in evaluating the institution's effectiveness in delivering a comprehensive and impactful educational experience.

Alumni who have given a 3 to 5 likert scale observed and recommended the following

- Alumni agree with the overall quality of education provided by the institution.

Recommendation

- Engage alumni in regular discussions and surveys to identify areas for improvement and enhancement in the educational programs.
- Maintain and continuously enhance the quality of education to ensure alignment with the evolving demands of the job market and personal development

.Alumni who have given a 2 to 1 likert scale observed and recommended the following

- . Their education provided limited preparation for the challenges they encountered.

Recommendation

- Engage alumni in discussions to understand their specific concerns and areas that require enhancement.

Conclusion:

Alumni feedback is instrumental in evaluating the overall quality of education provided by the institution. Maintaining and enhancing the overall quality of education contributes to a successful educational experience that equips students with the skills, knowledge, and mindset needed for personal and professional success.

R. Geetha
Principal
SHRIMATHI DEVKUNVAR NANALAL BHATT
VAISHNAV COLLEGE FOR WOMEN
AUTONOMOUS, CHROMEPET, CHENNAI-44.

EMPLOYERS FEEDBACK ANALYSIS

2.7 EMPLOYERS FEEDBACK QUESTIONS WITH RATING ON CURRICULUM

Rating 5-1 scale

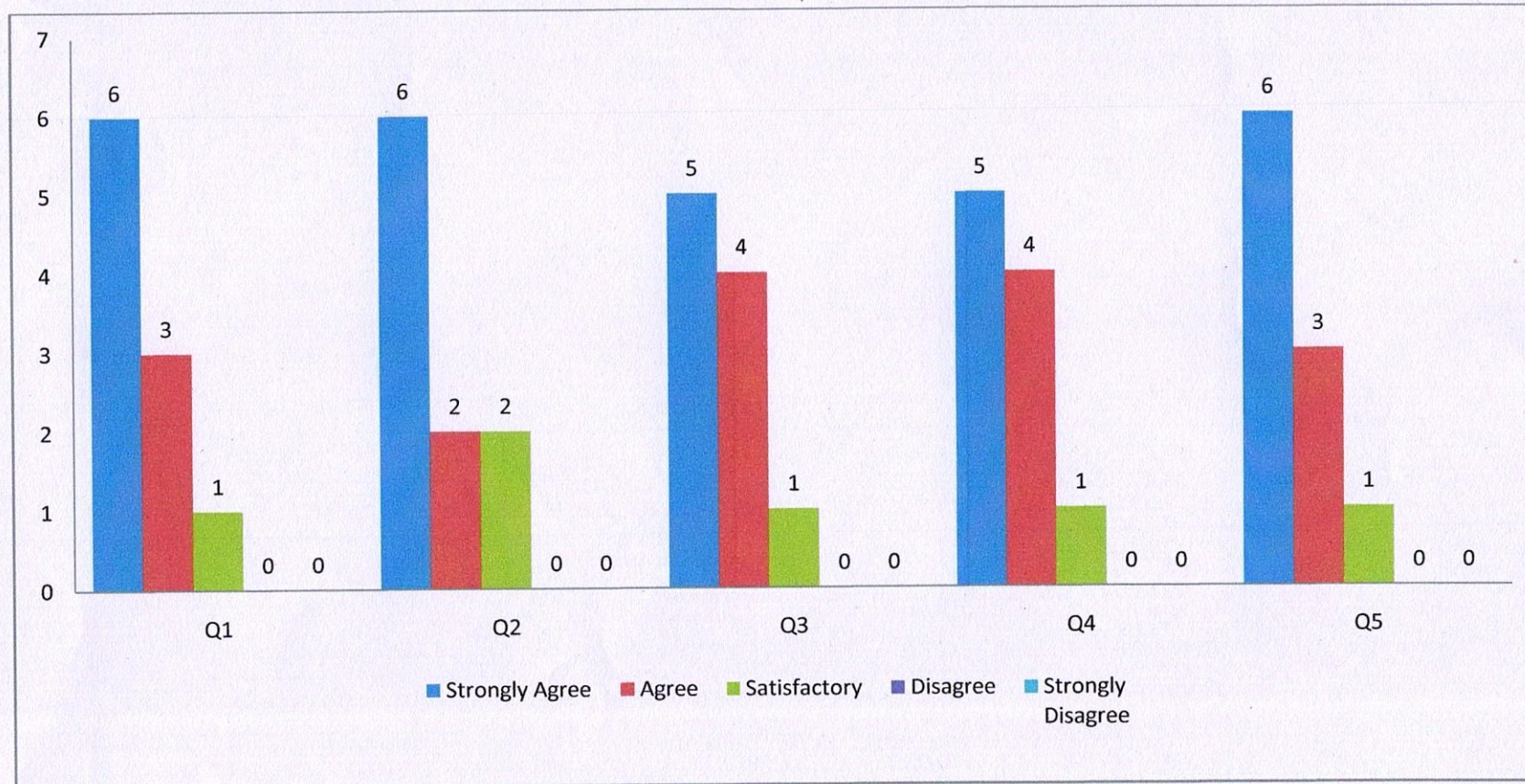
Responses: 10

S. No	Particulars	5 Strongly Agree	4 Agree	3 Satisfactory	2 Disagree	1 Strongly Disagree
1.	Programme Specific Knowledge	6	3	1	0	0
2.	Curriculum caters to the need of industry and helps in building efficiency and effectiveness of the organization	6	2	2	0	0
3.	Curriculum focuses on the development of employability skills	5	4	1	0	0
4.	Skills (communication, presentation, technical, analytical and presentation skills)	5	4	1	0	0
5.	Overall quality of education provided by the institution	6	3	1	0	0

R. Geetha
Principal

SHRIMATHI DEVKUNVAR NANALAL BHATT
VAISHNAV COLLEGE FOR WOMEN
AUTONOMOUS, CHROMEPET, CHENNAI-44.

2.8 EMPLOYERS FEEDBACK ANALYSIS AND RECOMMENDATION



R. Geetha
Principal
SHRIMATHI DEVKUNVAR NANALAL BHATT
VAISHNAV COLLEGE FOR WOMEN
AUTONOMOUS, CHROMEPET, CHENNAI-44.

1. Programme Specific Knowledge

Particulars	5 Strongly Agree	4 Agree	3 Satisfactory	2 Disagree	1 Strongly Disagree
Programme Specific Knowledge	6	3	1	0	0

This report assesses the level of programme-specific knowledge possessed by graduates as perceived by employers. The feedback from employers is crucial in understanding how well the educational programs at our institution prepare students for the workforce.

Employers who have given a 3 to 5 likert scale observed and recommended the following

- Employers hold a neutral stance on the level of programme-specific knowledge possessed by graduates.
- The existing curriculum and practical components effectively cater to employer expectations.

Recommendation

- Maintain and continuously enhance the quality of programme-specific knowledge development to ensure alignment with the evolving demands of the job market.
- Create opportunities for cross-disciplinary collaboration to further enhance the quality of education.

Conclusion:

Employer feedback is instrumental in evaluating the level of programme-specific knowledge possessed by graduates. Maintaining and enhancing programme-specific knowledge contributes to a successful educational experience that equips students with the skills and knowledge needed for career readiness and success in their respective fields.

R. Geetha
Principal

SHRIMATHI DEVKUNVAR NANALAL BHATT
VAISHNAV COLLEGE FOR WOMEN
AUTONOMOUS, CHROMEPET, CHENNAI-44.

2. Curriculum caters to the need of industry and helps in building efficiency and effectiveness of the organization

Particulars	5 Strongly Agree	4 Agree	3 Satisfactory	2 Disagree	1 Strongly Disagree
Curriculum caters to the need of industry and helps in building efficiency and effectiveness of the organization	6	2	2	0	0

This report evaluates the extent to which the curriculum at our institution caters to the needs of the industry and contributes to building efficiency and effectiveness within organizations, as perceived by employers. The feedback from employers is essential in understanding how well the educational programs align with industry requirements and contribute to workforce preparedness.

Employers who have given a 3 to 5 likert scale observed and recommended the following


- Employers agree with the alignment of the curriculum with industry needs and its contribution to building organizational efficiency and effectiveness.
- Employers appreciate the depth and breadth of the knowledge and skills graduates bring to their organizations.

Recommendation

- Engage in regular discussions with employers to identify areas for improvement and enhancement in the curriculum.
- Enhance experiential learning and practical components of the programs.
- Establish a feedback mechanism with employers to suggest additional training and skills development areas.

Conclusion:

Employer feedback is instrumental in evaluating the alignment of the curriculum with industry needs and its role in building efficiency and effectiveness within organizations. Maintaining and enhancing curriculum alignment with industry needs contributes to a successful educational experience that equips students with the skills and knowledge needed for career readiness and effective contributions to organizations.


 R. Ganitha
 Principal
 SHRIMATHI DEVKUNVAR NAMALAL BHATT
 VAISHNAV COLLEGE FOR WOMEN
 AUTONOMOUS, CHROMEPET, CHENNAI-44.
 56

3. Curriculum focuses on the development of employability skills

Particulars	5 Strongly Agree	4 Agree	3 Satisfactory	2 Disagree	1 Strongly Disagree
Curriculum focuses on the development of employability skills	5	4	1	0	0

This report assesses the extent to which the curriculum at our institution focuses on the development of employability skills, as perceived by employers. Employability skills are crucial in ensuring that graduates are well-prepared for the workforce. The feedback from employers helps understand how well the educational programs at our institution align with the development of these essential skills.

Employers who have given a 3 to 5 likert scale observed and recommended the following

- Employers agree with the focus of the curriculum on the development of employability skills.
- They believe that graduates are well-prepared for their respective fields in terms of employability skills.

Recommendation

- Maintain and continuously enhance the quality of the curriculum's focus on employability skills to ensure alignment with the evolving demands of the job market.
- Create opportunities for cross-disciplinary collaboration, workshops, and industry partnerships to further enhance employability skills.

Conclusion:

Employer feedback is instrumental in evaluating the curriculum's focus on the development of employability skills. Maintaining and enhancing the curriculum's focus on employability skills contributes to a successful educational experience that equips students with the skills and knowledge needed for career readiness and effectiveness in the workforce.

R. Geetha
Principal
SHRIMATHI DEVKUNVAR NANALAL BHATT
VAISHNAV COLLEGE FOR WOMEN
AUTONOMOUS, CHROMEPET, CHENNAI-44.

4. Skills (communication, presentation, technical, analytical and presentation skills)

Particulars	5 Strongly Agree	4 Agree	3 Satisfactory	2 Disagree	1 Strongly Disagree
Skills (communication, presentation, technical, analytical and presentation skills)	5	4	1	0	0

This report assesses the skills of graduates from our institution, including communication, presentation, technical, analytical, and problem-solving skills, as perceived by employers. Employer feedback is essential in understanding how well our graduates are equipped with the necessary skills for success in the workforce.

Employers who have given a 3 to 5 likert scale observed and recommended the following

- Employers agree with the level of skills possessed by our graduates, including communication, presentation, technical, analytical, and problem-solving skills.

Recommendation

- Engage in regular discussions with employers to identify areas for improvement and enhancement in skills development.
- Establish a feedback mechanism with employers to suggest specific training and skills development areas.
- Maintain and continuously enhance the quality of skills development to ensure alignment with the evolving demands of the job market.

Conclusion:

Employer feedback is instrumental in evaluating the skills possessed by our graduates maintaining and enhancing the skills of our graduates contributes to a successful educational experience that equips students with the skills and knowledge needed for career readiness and success in the workforce.

R. Geetha

Principal

SRIMATHI DEVKUNVAR NANALAL BHATT
VAISHNAV COLLEGE FOR WOMEN
AUTONOMOUS, CHROMEPET, CHENNAI-44.

5. Overall quality of education provided by the institution

Particulars	5 Strongly Agree	4 Agree	3 Satisfactory	2 Disagree	1 Strongly Disagree
Overall quality of education provided by the institution	6	3	1	0	0

This report assesses the overall quality of education provided by our institution, as perceived by employers. Employer feedback is crucial in understanding how well our graduates are prepared to meet the demands of the workforce and contribute effectively to their organizations

Employers who have given a 3 to 5 likert scale observed and recommended the following

- Employers agree with the overall quality of education provided by our institution.

Recommendation

- Collaborate with employers to identify specific areas that need enhancement and address gaps in our educational programs.
- Engage employers in regular discussions and surveys to identify areas for improvement and enhancement in our educational programs.
- Maintain and continuously enhance the quality of education to ensure alignment with the evolving demands of the job market and personal development.

Conclusion:

Employer feedback is instrumental in evaluating the overall quality of education provided by our institution. Maintaining and enhancing the overall quality of education contributes to a successful educational experience that equips students with the skills, knowledge, and mindset needed for personal and professional success.

R. Geetha

Principal

SHRIMATHI DEVKUNVAR NANALAL BHATT
VAISHNAV COLLEGE FOR WOMEN
AUTONOMOUS, CHROMEPET, CHENNAI-44.



Shrimathi Devkunvar Nanalal Bhatt Vaishnav College For Women (Autonomous)
Affiliated to University of Madras - Re-Accredited with 'A+' Grade by NAAC

STUDENTS' FEEDBACK ON CURRICULUM

Rating 5-1 scale

S. No	Particulars	5 Strongly Agree	4 Agree	3 Satisfactory	2 Disagree	1 Strongly Disagree
1	Curriculum (course) objectives & outcomes are well defined & clearly stated					
2	Curriculum provides sufficient domain knowledge and values appropriate to the area of study					
3	Curriculum gives equal weightage to theory and applications					
4	Are the courses in the curriculum placed sequentially					
5	Curriculum is relevant in cultivating social and environmental consciousness					
6	The learning activities and assignments recommended are relevant to the courses					
7	Projects aid experiential learning/Hands on training					
8	Syllabus is updated periodically to meet the industry requirements					
9	Syllabus is updated periodically to meet the appropriate for Placement/Higher Education					
10	Curriculum imparts Human Values and Professional Ethics					

R. Geetha
Principal

SHRIMATHI DEVKUNVAR NANALAL BHATT
VAISHNAV COLLEGE FOR WOMEN
AUTONOMOUS, CHROMEPET, CHENNAI-44.



Shrimathi Devkunvar Nanalal Bhatt Vaishnav College For Women (Autonomous)
Affiliated to University of Madras - Re-Accredited with 'A+' Grade by NAAC

FACULTY FEEBACK

Rating 5-1 scale

S. No	Particulars	5 Strongly Agree	4 Agree	3 Satisfactory	2 Disagree	1 Strongly Disagree
1	Assortment and comprehensiveness of the courses offered – core. Allied and Elective.					
2	Advanced knowledge and skills appropriate to the discipline					
3	Regional and global relevance of the curriculum					
4	Balance of theory and its application					
5	Ability to develop creative, analytical and critical thinkers					
6	Employment orientation of the syllabus					
7	Thrust given to developing entrepreneurial competency					
8	Pertinence of curriculum for pursuing higher education and research					
9	Intrinsic focus on inculcating human values and professional ethics					
10	Revision of the curriculum based on suggestion from stakeholders					
11	Alignment of the curriculum with programme specific outcomes and course outcomes					

R. G. Sathya
Principal

SHRIMATHI DEVKUNVAR NANALAL BHATT
VAISHNAV COLLEGE FOR WOMEN
AUTONOMOUS, CHROMEPET, CHENNAI-44.



Shrimathi Devkunvar Nanalal Bhatt Vaishnav College For Women (Autonomous)
Affiliated to University of Madras - Re-Accredited with 'A+' Grade by NAAC
ALUMNI FEEBACK

Rating 5-1 scale

S. No	Particulars	5 Strongly Agree	4 Agree	3 Satisfactory	2 Disagree	1 Strongly Disagree
1	Extensiveness of courses offered					
2	Advanced knowledge and skills appropriate to the discipline					
3	Relevance of the curriculum in meeting social and industry needs					
4	Adequacy of preparation for a related career					
5	Developing entrepreneurial competency					
6	Stimulating research aptitude					
7	Enhancing communication skills – verbal and written					
8	Encouraging social and environmental consciousness					
9	Sensitization on gender-related issues					
10	Inculcation of human values and professional ethics					
11	Opportunities for pursuing internship					
12	Overall quality of education provided by the institution					

R. Geetha
Principal

SHRIMATHI DEVKUNVAR NANALAL BHATT
VAISHNAV COLLEGE FOR WOMEN
AUTONOMOUS, CHROME PET, CHENNAI-44.



Shrimathi Devkunvar Nanalal Bhatt Vaishnav College For Women (Autonomous)
Affiliated to University of Madras - Re-Accredited with 'A+' Grade by NAAC

RECRUITERS FEEBACK

Rating 5-1 scale

S. No	Particulars	5 Strongly Agree	4 Agree	3 Satisfactory	2 Disagree	1 Strongly Disagree
1	Programme Specific Knowledge					
2	Curriculum caters to the need of industry and helps in building efficiency and effectiveness of the organization					
3	Curriculum focuses on the development of employability skills					
4	Skills (communication, presentation, technical, analytical and presentation skills)					
5	Overall quality of education provided by the institution					

R. Geetha
Principal
SHRIMATHI DEVKUNVAR NANALAL BHATT
VAISHNAV COLLEGE FOR WOMEN
AUTONOMOUS, CHROMEPET, CHENNAI-44.